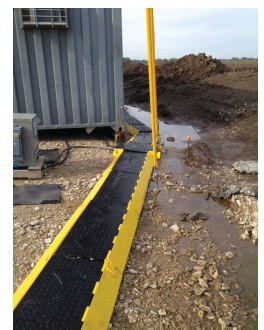
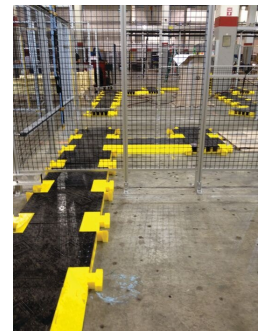
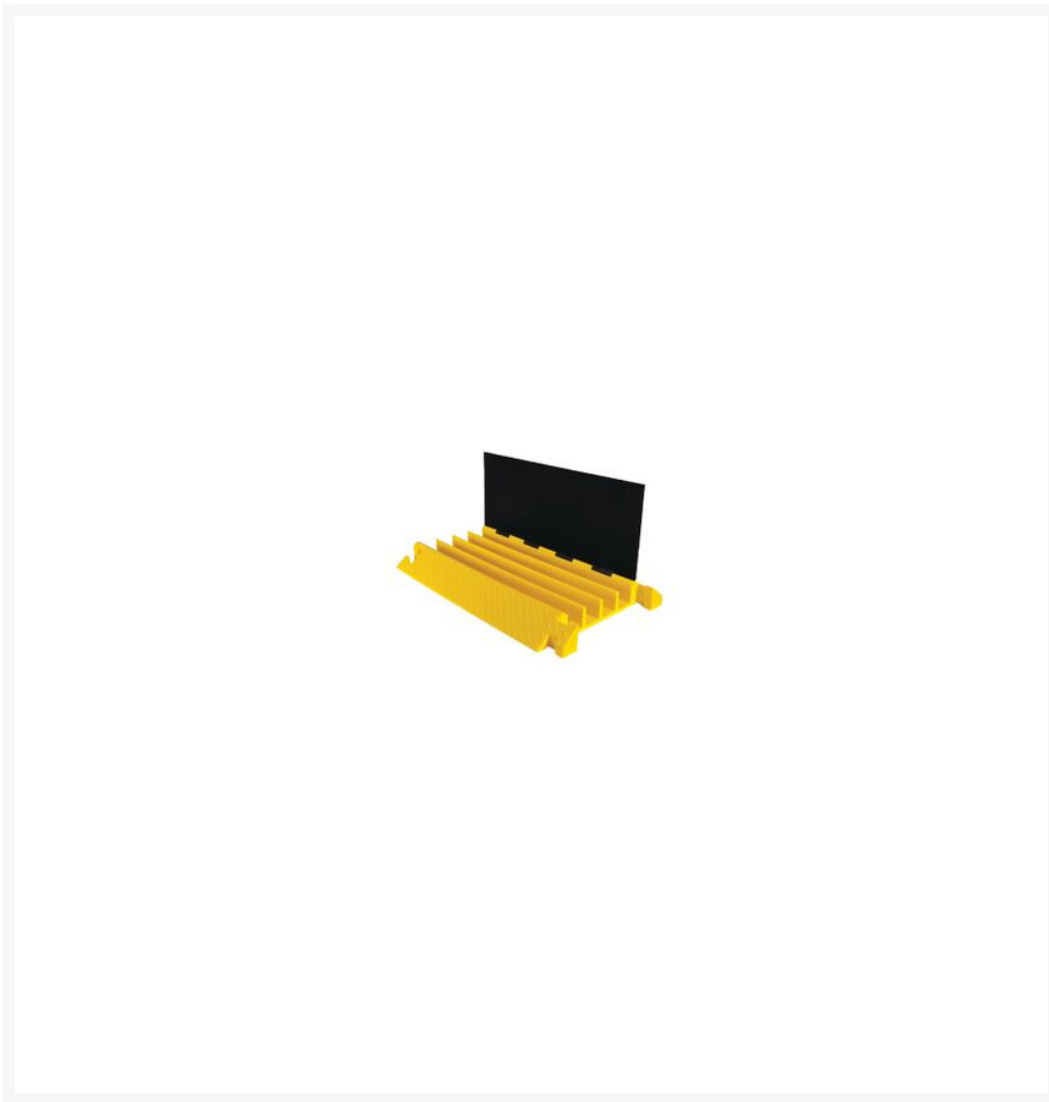


4-Channel Bumble Bee Cable Protector for 3" Lines, Black/Yellow - BB4-300GM-B/Y

Product Images



Short Description

- Protects cables and hoses up to 3" outside dia.
- Patented T-connectors to extend to any desired length

- Thick lid and base allow for high volume of traffic
- Reinforced hinged lid for easy cable placement
- Modular interlocking design
- Ideal for automotive manufacturing and similar industries
- Custom cable protectors are available. [Get a quote here.](#)

Description

Checkers Bumble Bee® 4-Channel Cable Protector model BB4-300GM-B/Y is ideal for automotive manufacturing environments. Constructed of durable, all-weather urethan, this lightweight cable guard can manage the stress of high-volume traffic, effectively securing electrical cables and hose lines up to 3 inches in height and width.

The 4-Channel Cable Protector features a reinforced hinged lid to easily place electrical cables and hose lines to protect from damage as well as a diamond tread surface for maximum traction. The modular interlocking design is well suited for use in industrial manufacturing and automotive industries.

Custom cable protectors can be made with different colors and embossed logos. [Get a quote](#) with your specific requirements.

Specifications

Model No	BB4-300GM-B/Y
Color	Black/Yellow
Quantity Included	1
Load Capacity Per Axle	20200 lbs
Load Capacity Per Tire	10100
Width (Inches)	36
Height (Inches)	24
Number of Channels	4-Channels
Connector Type	T-Connector Connector
Channel Width	3

Prop 65

⚠️WARNING: This product can expose you to chemicals including Carbon Black, Titanium Dioxide, Formaldehyde, and Benzyl Butyl Phthalate, which are known to the State of California to cause cancer and birth defects or other reproductive harm. For more information go to www.P65Warnings.ca.gov.