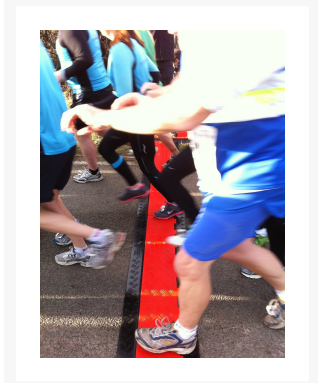
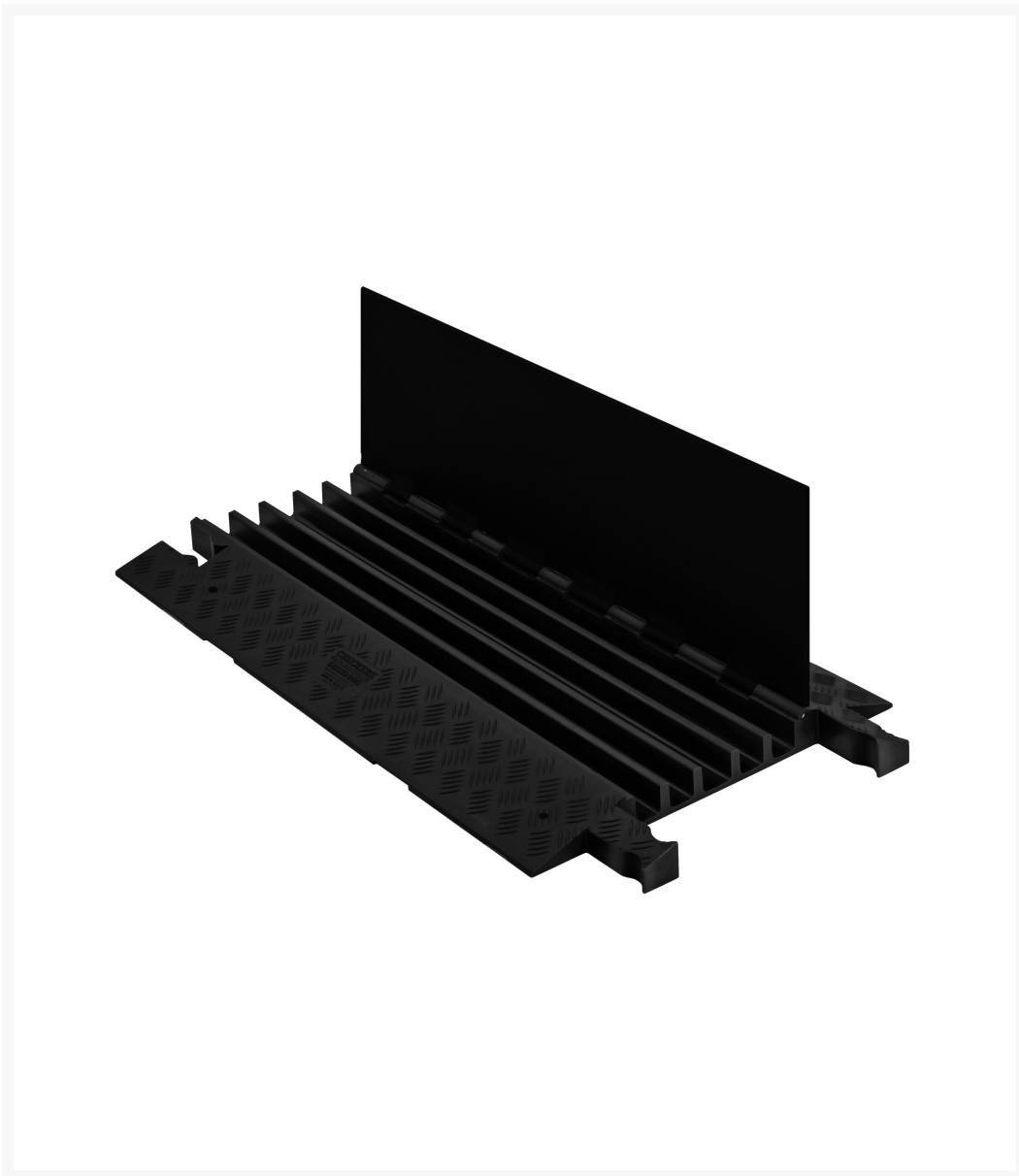
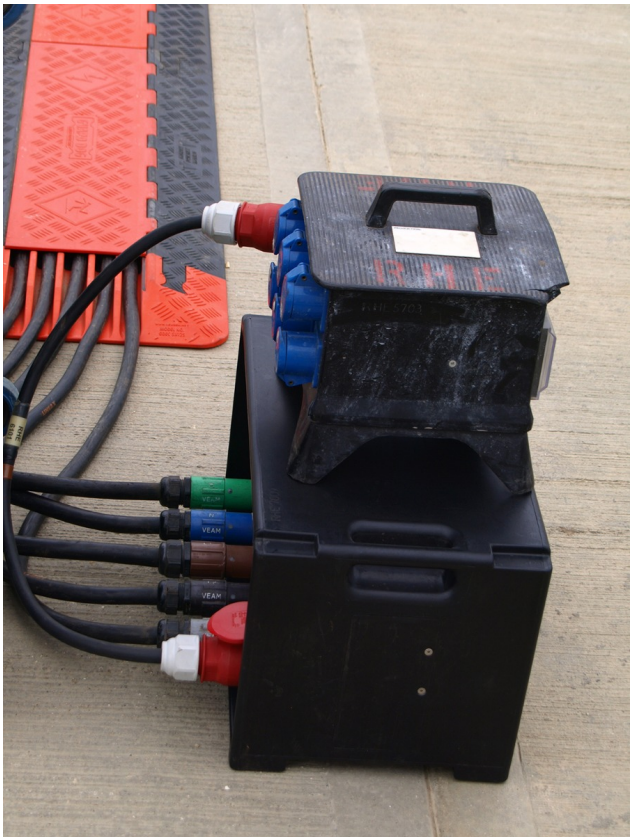
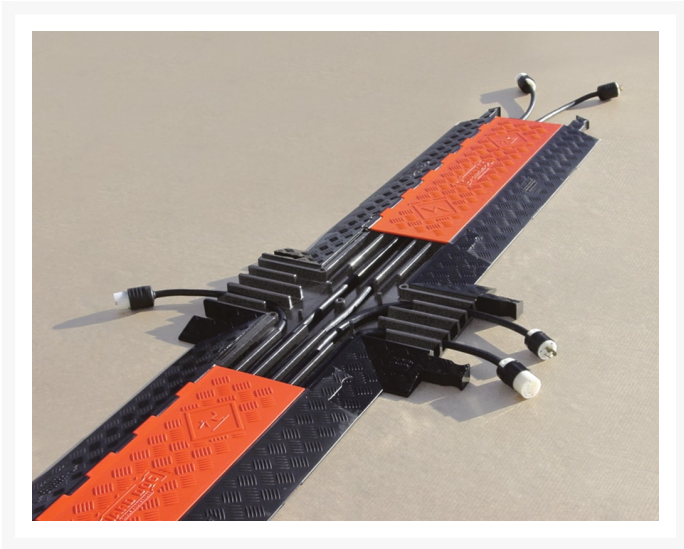


# 5-Channel Guard Dog® Cable Protector for 1.325" Lines, Black Lid/Black Base - GD5X125-B/B

## Product Images







## Short Description

---

- Protects cables and hoses up to 1.325" outside dia.
- Dog Bone® connectors to extend to any desired length
- Reinforced hinged lid for easy cable placement
- All-weather polyurethane construction
- Patented 5-bar tread surface for maximum traction
- Includes four through-holes for temporary mounting
- Ideal for use in amusement parks, entertainment venues, sporting events, and most public, commercial, industrial, construction, and utility applications
- Custom cable protectors are available. [Get a quote here.](#)

## Description

---

The Guard Dog 5-Channel Cable Protector features a hinged lid, a modular, interlocking design and the capacity to protect cables and hoses with an outside diameter of up to 1.325". Its all-weather polyurethane construction gives it unmatched durability, and with the use of Dog Bone connectors, it can extend to any length. It also features a 5-bar tread surface, ensuring maximum traction for both vehicles and pedestrians.

Custom cable protectors can be made with different colors and embossed logos. **Get a quote with your specific requirements.**

Because of its durability, it's equally-suited for both commercial and industrial applications. Use it to keep electrical cables at an amusement park out of harm's way or protect critical hose lines from passing vehicles at an industrial site. Either way, it's more than up to the task, and its four through-holes ensure it can easily be secured to the base surface for a longer-term installation.

## Specifications

---

Model No	GD5X125-B/B
UPC	812958004470
Color	Black Lid / Black Base
Quantity Included	1
Pallet Quantity	50
Load Capacity Per Axle	21000 lbs
Load Capacity Per Tire	10500
Length (Inches)	39.5
Width (Inches)	19.5
Height (Inches)	2.13
Max Cable Outside Diameter (Inches)	1.325
Number of Channels	5-Channels
Connector Type	Dog Bone Connector
Channel Width	1.339

## Prop 65

---

**⚠️WARNING:** This product can expose you to chemicals including Carbon Black, Titanium Dioxide, Formaldehyde, and Benzyl Butyl Phthalate, which are known to the State of California to cause cancer and birth defects or other reproductive harm. For more information go to [www.P65Warnings.ca.gov](http://www.P65Warnings.ca.gov).