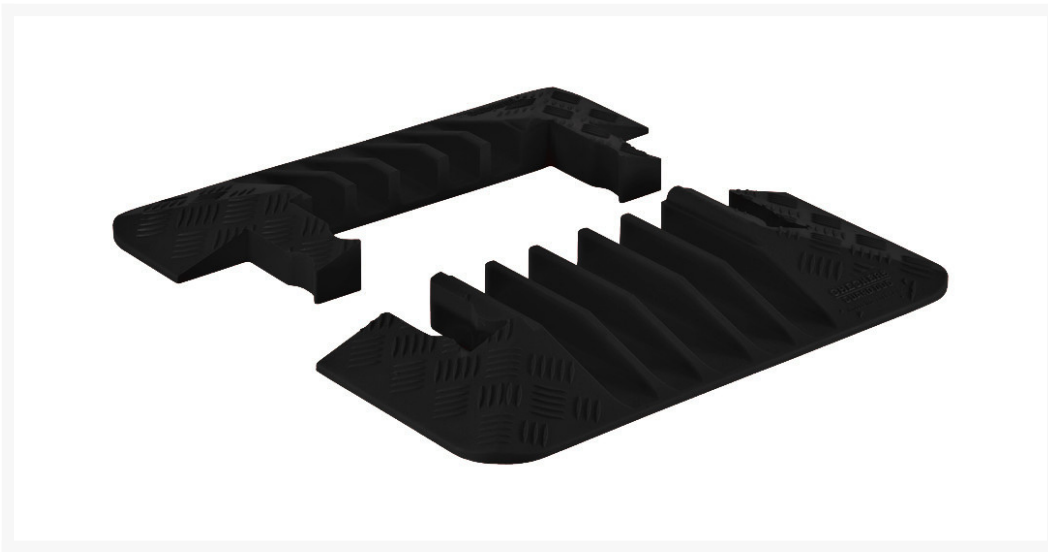


End Caps for GD5X125 5-Channel Guard Dog® Cable Protector, Black -GDEC5X125-B

Product Images



Short Description

- End Caps Sold In Pairs Only (Male & Female)
- Protects Cables And Hoses Up To 1.325" Outside Dia.
- Dog Bone® connectors
- All-Weather Polyurethane Construction
- Patented 5-Bar Tread Surface For Maximum Traction
- Custom cable protectors are available. [Get a quote here.](#)

Description

Sold in pairs of male and female, Guard Dog's End Caps are designed to round off a 5-channel cable protection system. With all-weather polyurethane construction, they provide extra protection for both your cables/hoses and for the Dog Bone connectors. In addition, they reduce trip hazards at the end of each run. As with other Guard Dog protectors, the end caps feature Guard Dog's patented 5-bar tread surface, offering

maximum traction for both pedestrian and vehicle traffic.

Whether you're running cables through an amusement park, powering heavy machinery in an industrial facility, setting up lighting for a concert or powering construction equipment, you can rely on Guard Dog to protect your cables.

Custom cable protectors can be made with different colors and embossed logos. [Get a quote with your specific requirements.](#)

Specifications

Model No	GDEC5X125-B
UPC	812542021302
Color	Black
Quantity Included	1
Load Capacity Per Axle	21000 lbs
Load Capacity Per Tire	10500
Length (Inches)	20.88
Width (Inches)	14
Height (Inches)	2.13
Max Cable Outside Diameter (Inches)	1.325
Number of Channels	5-Channels
Connector Type	Dog Bone Connector
Channel Width	1.339

Prop 65

⚠️WARNING: This product can expose you to chemicals including Carbon Black, Titanium Dioxide, Formaldehyde, and Benzyl Butyl Phthalate, which are known to the State of California to cause cancer and birth defects or other reproductive harm. For more information go to www.P65Warnings.ca.gov.