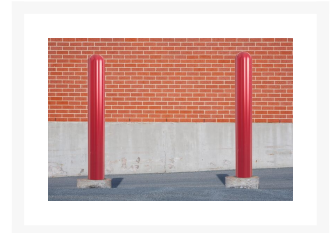
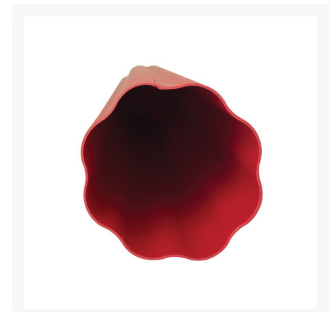


8" x 56" Fluted Bollard Cover, Red - 1738R

Product Images





Short Description

EAGLE



Justrite Safety Group

- Fits standard 8-inch-wide bollard posts, up to 56 inches tall
- Resilient fluted design allows for more flexibility and durability upon impact
- Easily trimmed on-site to the exact height required
- Red color meets OSHA 1910.144 safety color code standards for marking physical hazards
- Low maintenance – eliminates the need for annual painting

Description

Use Eagle fluted red bollard covers over steel and concrete bollards to help protect your building and equipment from accidents or collisions. Catch the attention of drivers and warn them to stop or slow down as they approach your facility, gas station or unauthorized areas. Our red bollard sleeves also meet OSHA 1910.144 safety color code standards for marking physical hazards, so they are great for production floors, loading docks and marking fire lanes.

Why use Eagle bollard covers?

Bollard post covers quickly improve property appearance and extend the life of your steel or concrete bollards for minimal costs. Made in the U.S. with American-manufactured HDPE, these long-lasting, all-weather bollard covers are resistant to rusting, cracking, denting or fading.

Unlike our competitors, we only use ½-inch high-density polyethylene to provide the strongest protection. Eagle post covers are nonconductive, chemical resistant, can withstand extreme temperatures (-30°F to 130°F) and feature UV inhibitors for fade resistance.

Our post sleeves are easy to install. Simply slide the sleeve over an existing 8-inch standard diameter steel or concrete bollard post that is up to 56 inches tall. Trim to the exact height you need. To clean, wipe down with soap and water.

Opting for 100% recyclable bollard covers rather than going through the effort of yearly maintenance and painting will free up your time and have a positive impact on your budget and the environment.

Frequently Asked Questions

What are bollards?

Bollards are steel or concrete structures meant to protect buildings, structures or any assets like utility meters, electrical boxes, pipes or machinery from vehicle collisions. They are also used in outdoor spaces to mark pedestrian traffic patterns or bike paths, keep pedestrians out of dangerous areas and prevent cars from driving or parking too close to unauthorized areas. [Learn more about bollard posts](#)

What are bollard covers?

Bollard post covers are colorful plastic sleeves that slide over bollards to improve their appearance, increase their life and save companies the time and money of [annual painting and maintenance](#).

How should I space my bollards?

In accordance with the Americans with Disabilities Act, bollards should be no closer than 3 feet apart so pedestrians in wheelchairs can move through the space. However, spacing between posts should not exceed 5 feet to ensure bollards provide protection against vehicles.

Can bollard covers be used for temporary setups?

Yes, bollard post covers can be used for temporary setups when combined with a poly base such as [1732BASE](#) or [1730BASE](#). However, covers alone do not meet ASTM crash standards.

Can I customize bollard sleeves?

Yes, Eagle offers color customization and embossing on orders of 500 bollard sleeves or more. Please [contact us](#) for more information or a quote.

Specifications

Model No	1738R
Color	Red
UPC	48441001460
Material Specifications	High-Density-Polyethylene
Dimensions, Exterior	10D x 57H
Pallet Quantity	16
Net Weight, lbs	9
Net Weight, kgs	4.08
Inside Diameter	8.875