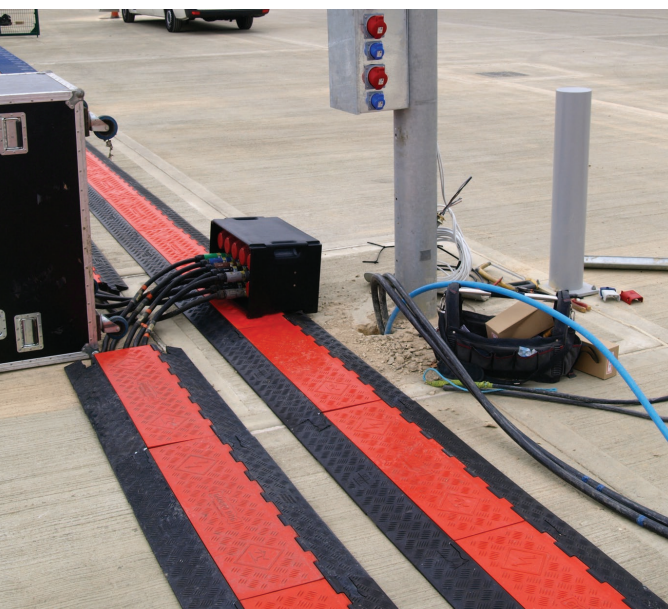




Cable Protectors

- Cable protectors provide safe passage for pedestrians, vehicles and equipment while protecting valuable electrical cables, cords and hose lines from damage
- Patented modular, interlocking design can be customized to accommodate any number of cables
- Variety of styles and sizes to suit any application

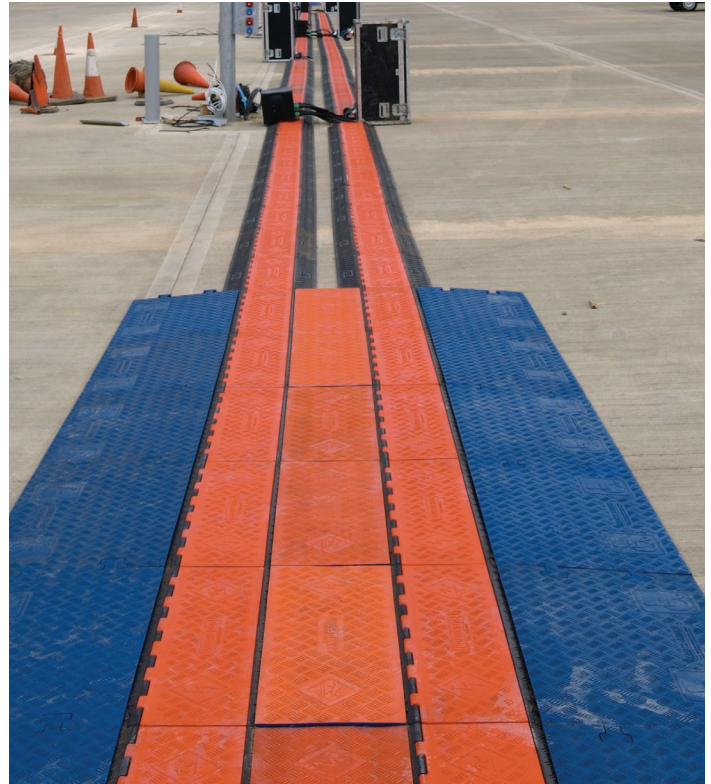


The Perfect System

Our cable protectors feature a patented modular, interlocking design that can be customized to accommodate any number of cables. This innovative design makes setting up, dismantling, and storing the system simple.

Checkers cable management offers the most extensive line of high performance cable/hose protection products in the world. These durable cable protection systems provide a safer method of passage for pedestrian traffic, vehicles and heavy duty equipment while protecting valuable electrical cables, cords and hose lines from damage.

Our patented design and connector systems are the best in the industry, and made in the USA.



Guard Dog® Series Cable Protectors in use at a sports arena

Advantages of Using Checkers Cable Protection Systems

- Urethane construction is lighter and more durable than rubber imitations in extreme weather conditions
- Non-conductive material insulates and protects cords/cable, as well as people
- We offer extensive accessories such as ADA/DDA compliant access ramps, protector bridges, 45° & 90° turns, and end caps
- Universal safety colors alerting all types of traffic to the product's presence
- Only manufacturer in the world offering customized solutions, including logos molded into the product
- Multiple channel options so each cable and hose can have its own dedicated channel
- Modular interlocking design that makes setting up, dismantling and storing the product simple and straightforward

Specification Data for Urethane Models

Material	Urethane (UV stabilized)
Operating Temp	-40° F to 120° F (-40° C to 48° C)
Hinge Pin Material	Reinforced fiberglass (where applicable)
Safety Symbols	Per ANSI. Z535.3-1991 (where applicable)



Safety Warning Symbols
molded into protectors (where applicable)



Advantages of Urethane vs. Rubber

- Up to 75% lighter, easier to handle and less costly to ship
- Withstands repetitive impact & abuse over longer periods of time
- Superior load bearing capacity and broader hardness range
- Better oil, chemical, fuel & lubricant resistance
- Higher abrasion, cut, and tear resistance
- UV Stable—use indoors or outside
- Doesn't smell toxic like some imported products

Choosing The Right Model

Channel Size and Maximum O.D.

5, 4, 3, 2, and 1-channel models available. Check your cable/hose outside diameter to ensure it will fit into your desired cable protector.

Height/Slope

Cable protector height varies. Understand the clearance your vehicles require; low profile models, ADA compliant ramps and unique accessories are available if needed.















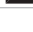
ADA/DA
Compliant Accessories

Color Options/Ordering

Select cable protectors offer multiple color options. Where applicable, specify your chosen color by adding the color code to the end of the product number.

For example, CP5X125-Y/O is the complete model number for the cable protector pictured above.

Unit Color	Color Code	Icon
Yellow	Y	
Orange	O	
Black	B	
Blue	BLU	

Unit Color(s)	Color Code (Lid/Base)	Icon
Yellow/Orange	Y/O	
Yellow/Black	Y/B	
Yellow/Blue	Y/BLU	
Yellow/Gray	Y/GRY	
Orange/Yellow	O/Y	
Orange/Black	O/B	
Orange/Blue	O/BLU	
Black/Yellow	B/Y	
Black/Black	B/B	

Load Capacity

Determine the required load capacity for your application. Know what type of vehicles and pedestrian traffic will be crossing over your cable protectors.

General Rule

As the number of channels on the protector decreases, channel height increases (Does not apply to low profile and drop over models).

Connector Style

Make sure your product will be compatible with previous style cable protectors you may already own. Available connector types (varies by model):



T-Shaped



Dog Bone



Hourglass®



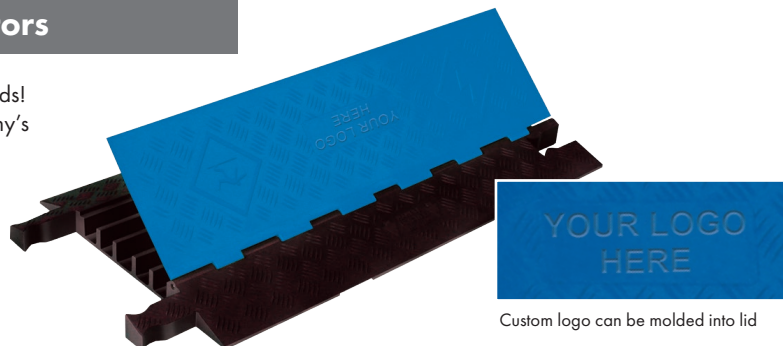
Gripper



L-Shaped

Customize Your Cable Protectors

Customize your cable protectors to meet your needs! We can create a custom color, mold your company's logo into the lid, or both.



Custom logo can be molded into lid

Cable Protector Reference Guide

	Product	Model No.	Maximum OD	Load Capacity (per axle)	# of Channels	Connector Type	Prop 65
Linebacker®	Heavy Duty 5-Channel	CP5X125	1.35 in (3.43 cm)	40,300 lb (18,280 kg)	5	 T-Shaped	
	Heavy Duty 4-Channel	CP4X125	1.35 in (3.43 cm)	40,300 lb (18,280 kg)	4		
	Heavy Duty 3-Channel	CP3X225	2.25 in (5.72 cm)	28,420 lb (12,892 kg)	3		
	Heavy Duty 2-Channel	CP2X325	3.25 in (8.27 cm)	21,760 lb (9,870 kg)	2		
	General Manufacturing 4-Channel	CP4X300	3 in (7.62 cm)	20,200 lb (9,163 kg)	4		
	General Purpose 5-Channel	CP5X125-GP	1.3 in (3.3 cm)	21,000 lb (9,526 kg)	5		
	General Purpose Drop Over/Split Top 1.25-in H	CP1X125	1.25 in (3.18 cm)	23,400 lb (10,614 kg)	1		
	General Purpose Drop Over/Split Top 2.25-in H	CP1X225	2.25 in (5.72 cm)	17,000 lb (7,712 kg)	1		
Yellow Jacket®	Heavy Duty 5-Channel	YJ5-125	1 in (2.54 cm)	32,600 lb (14,787 kg)	5	 Dog Bone	
	Heavy Duty 5-Channel ADA	YJ5-125-ADA	1.325 in (3.37 cm)	21,000 lb (9,526 kg)	5		
	Heavy Duty 4-Channel	YJ4-125	1.25 in (3.18 cm)	32,600 lb (14,787 kg)	4		
	Heavy Duty 3-Channel	YJ3-225	2.125 in (5.4 cm)	28,420 lb (12,892 kg)	3		
	Heavy Duty 5-Channel - 3.75 in. Channel	YJ5-400	3.75 in (9.53 cm)	15,980 lb (7,248 kg)	5		
	Heavy Duty 1-Channel 5 in. Height	YJ1-500	5 in (12.7 cm)	18,780 lb (8,518 kg)	1		
	Extreme Crossover System 2-Channel	YJ2-400	3.75 in (9.53 cm)	800,000 lb (362,873 kg)	2		
	Heavy Duty 5-Channel AMS System	YJ5-125-AMS	1 in (2.54 cm)	32,600 lb (14,787 kg)	5		
Guard Dog®	Heavy Duty 3-Channel AMS System	YJ3-225-AMS	2.25 in (5.72 cm)	28,420 lb (12,892 kg)	3	 Hourglass®	
	General Purpose 5-Channel	GD5X125	1.325 in (3.37 cm)	21,000 lb (9,526 kg)	5	 Dog Bone	
	General Purpose 5-Channel ADA	GD5X125-ADA	1.325 in (3.37 cm)	21,000 lb (9,526 kg)	5		
	General Purpose 3-Channel	GD3X225	2.25 in (5.8 cm)	28,420 lb (12,892 kg)	3		
	Low Profile 5-Channel	GD5X75-ST	0.75 in (1.9 cm)	48,000 lb (21,772 kg)	5		
	Low Profile 5-Channel w/ ADA Ramps	GD5X75	0.75 in (1.9 cm)	68,000 lb (30,844 kg)	5		
	Low Profile 3-Channel	GD3X75-ST	0.75 in (1.9 cm)	34,000 lb (15,422 kg)	3		
	Low Profile 3-Channel w/ ADA Ramps	GD3X75	0.75 in (1.9 cm)	54,000 lb (24,492 kg)	3		
	Low Profile 2-Channel	GD2X75-ST	0.75 in (1.9 cm)	26,000 lb (11,792 kg)	2		
	Low Profile 2-Channel w/ ADA Ramps	GD2X75	0.75 in (1.9 cm)	46,000 lb (20,864 kg)	2		
	Low Profile 1-Channel	GD1X75-ST	0.75 in (1.9 cm)	26,000 lb (11,792 kg)	1		
	Low Profile 1-Channel w/ ADA Ramps	GD1X75	0.75 in (1.9 cm)	46,000 lb (20,864 kg)	1		
	General Purpose Drop Over 3-Channel	GD3-DO	1.325 in (3.37 cm)	21,000 lb (9,526 kg)	3		
Bumble Bee®	Light Duty 5-Channel with T-Connectors	BB5-125-T	1.25 in (3.18 cm)	12,000 lb (5,444 kg)	5	 T-Shaped	
	Light Duty 5-Channel with Dog Bone Connectors	BB5-125-D	1.25 in (3.18 cm)	12,000 lb (5,444 kg)	5	 Dog Bone	
Grip Guard®	Lightweight 5-Channel	GG5X125	1.25 in (3.18 cm)	10,000 lb (4,534 kg)	5	 Gripper	
	Lightweight 3-Channel	GG3X225	2.25 in (5.72 cm)	10,000 lb (4,534 kg)	3		
FastLane®	Lightweight 1-Channel Drop Over	FL1X1.5	0.50 in (1.27 cm)	2,100 lb (954 kg)	1	 L-Shaped	
	Lightweight 1-Channel Drop Over	FL1X4	1 in (2.54 cm)	2,100 lb (954 kg)	1		
	Lightweight 2-Channel Drop Over	FL2X1.75	1 in (2.54 cm)	2,100 lb (954 kg)	2		

 **WARNING:** This product can expose you to chemicals including carbon black, titanium dioxide, formaldehyde, and benzyl butyl phthalate, which are known to the State of California to cause cancer and birth defects or other reproductive harm. For more information go to www.P65Warnings.ca.gov.

Heavy Duty Cable Protectors

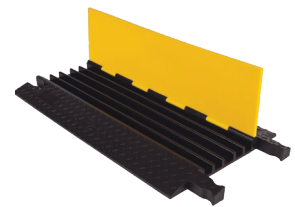
Linebacker® Series

- T-connector
- Checkers' most robust cable protection option
- High load-bearing capacity
- Ideal for: Mining, Oil & Gas, Military, Industrial Applications



Yellow Jacket® Series

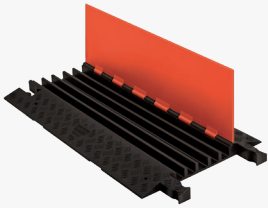
- Dog Bone connector
- The "original" cable protector for over 30 years
- For heavy traffic areas
- Ideal for: Mining, manufacturing, material handling, construction



Medium Duty Cable Protectors

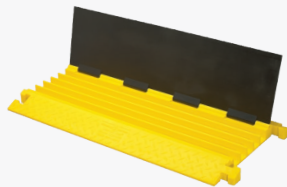
Guard Dog® Series

- Dog Bone connector
- General Purpose
- Low profile options
- Ideal for entertainment, sporting events, and public and commercial applications



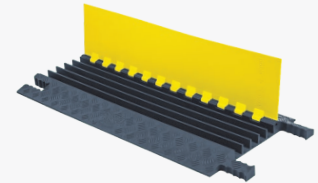
Bumble Bee® Series

- T-connector or Dog Bone connector
- Ideal for light industrial applications, entertainment venues, and general purpose



Grip Guard® Series

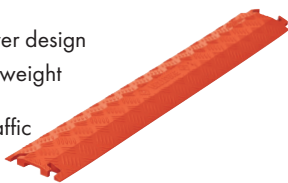
- Gripper connector
- Lightweight construction - as low as 12.75 lb
- Snap Fit™ hinged lid
- Ideal for public entertainment venues, and light commercial applications



Light Duty Cable Protectors

Fastlane® Series

- L-connectors
- Easy drop-over design
- Ideal for lightweight vehicles and pedestrian traffic



Rubber Duct Systems

- Easy to install
- Ideal for indoor office spaces and light pedestrian traffic



Quick Hook Overhead Protector

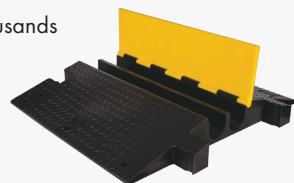
- Hang cables above workspace—holds up to 80 lb
- Installs in seconds to add and remove cords quickly
- Complies with over 15 cord related OSHA regulations



Hose Protection

Extreme Crossover Systems

- Protects cables & hoses up to 4.5 in OD
- Models available to withstand thousands of pounds gross vehicle weight
- Durable urethane construction is impact and abrasion resistant to trucks and falling rock
- Eliminates trenching cables



Diamondback® Hose Bridge System

- Protect large lines up to 6.5 in OD
- Urethane construction for durability
- Single or multiple tunnel systems available to customize to your needs



ADA/DDA Accessibility

Accessibility ramp systems are manufactured to meet ADA and DDA compliant specifications and provide a safer crossing for vehicle and pedestrian traffic while protecting valuable electrical cables and hose lines. The gradual slope and slip-resistant surface ensure an easy transition for wheelchairs, carts, forklifts, and other low profile vehicles.

Unlimited Channels

AMS (Advanced Modular System) is a patented technology that uses separate cable protector sections and ramps to create a fully expandable system to hold an unlimited number of cables. Available on Yellow Jacket® Series Cable Protectors.

Protector Bridges connect multiple cable protectors together to create a continuous, level surface. The modular bridge creates an expandable system for an unlimited number of channels. Available for select Linebacker® and Guard Dog® Series Cable Protectors.



Cable Protectors In Action



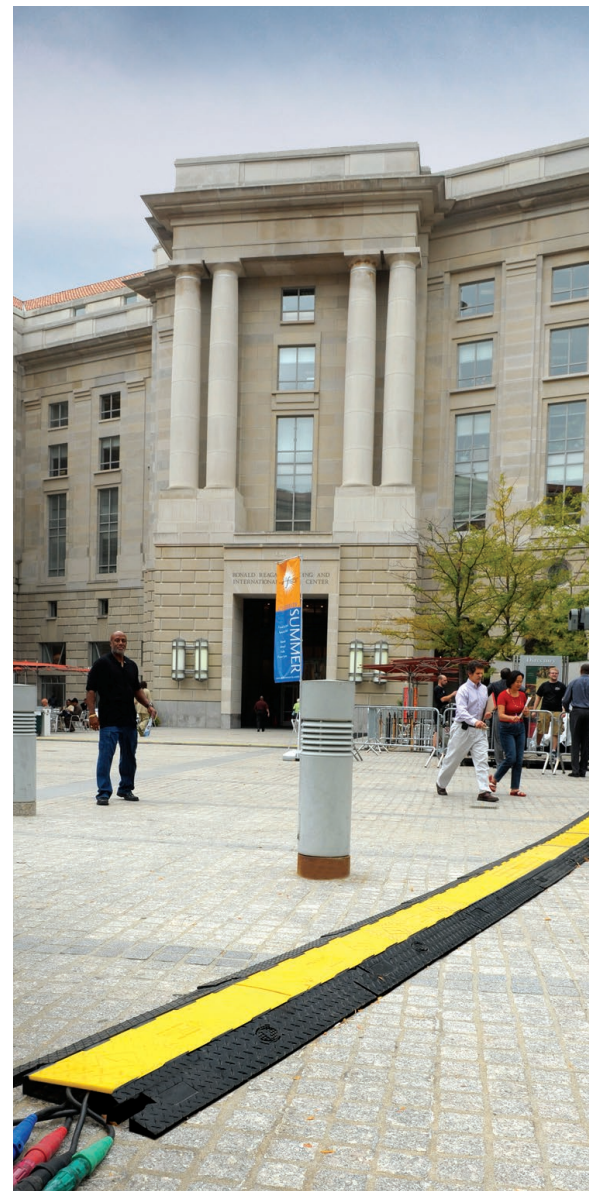
Fastlane® Drop Overs in use at a festival



Linebacker® in use on a construction site

"Checkers Cable Protectors have greatly improved the safety and accessibility of our carnival midway and are one of the greatest improvements to hit our midway in years."

Gehrie Aten, President, Bill Hames Shows, Inc.



Yellow Jacket® in use at a community event

Checkers™ Vehicle & Motion Safety

Checkers offers a wide variety of vehicle-based safety solutions. Products include wheel chocks, warning whips, vehicle identification signs, parking lot safety solutions, and more. Through our continued growth and innovation, Checkers is positioned to continue to serve as your leading global provider of motion safety solutions.

Wheel Chocks

Checkers wheel chocks are a best-in-class chocking solution that keeps both equipment and workers safe. Our chocks are used around the world and are offered in sizes to fit almost any vehicle. Whether you are chocking a fully-loaded 400-ton haul truck or a utility trailer, we have the wheel chocks you need to safely secure your vehicle and meet compliance standards.

Warning Whips

Checkers industrial strength warning whips are constructed with a premium fiberglass resin to ensure the highest performance in any condition. Available in 3, 5, 6, 8, 10 or 12 foot lengths, these whips include a threaded hex base for vehicle attachment and either a heavy-duty Day Bright™ fluorescent orange, green, or yellow flag to help identify vehicles, equipment, or important locations at work sites. You have your choice of lighted or non-lighted whips, with various lighting and mounting options available as accessories. Checkers Whips are engineered to handle the harshest conditions at mines, construction sites, and other industrial applications.

Vehicle Identification Lighting

Checkers vehicle identification lights provide fast and easy identification of any type of equipment in heavy-duty work environments. Built with high-output LED lights, these lights provide superior visibility during the day or night. These durable lights are built to withstand the harsh weather and working conditions frequently experienced in mining, construction, and other industrial applications.

Traffic & Parking Lot Safety

Rounding out our motion safety brand is our premium, industry-leading rubber and plastic parking lot safety solutions. Keeping pedestrians and vehicles safe, these safety products assist in safe vehicle operation, stopping and speed control in parking lots and garages.

