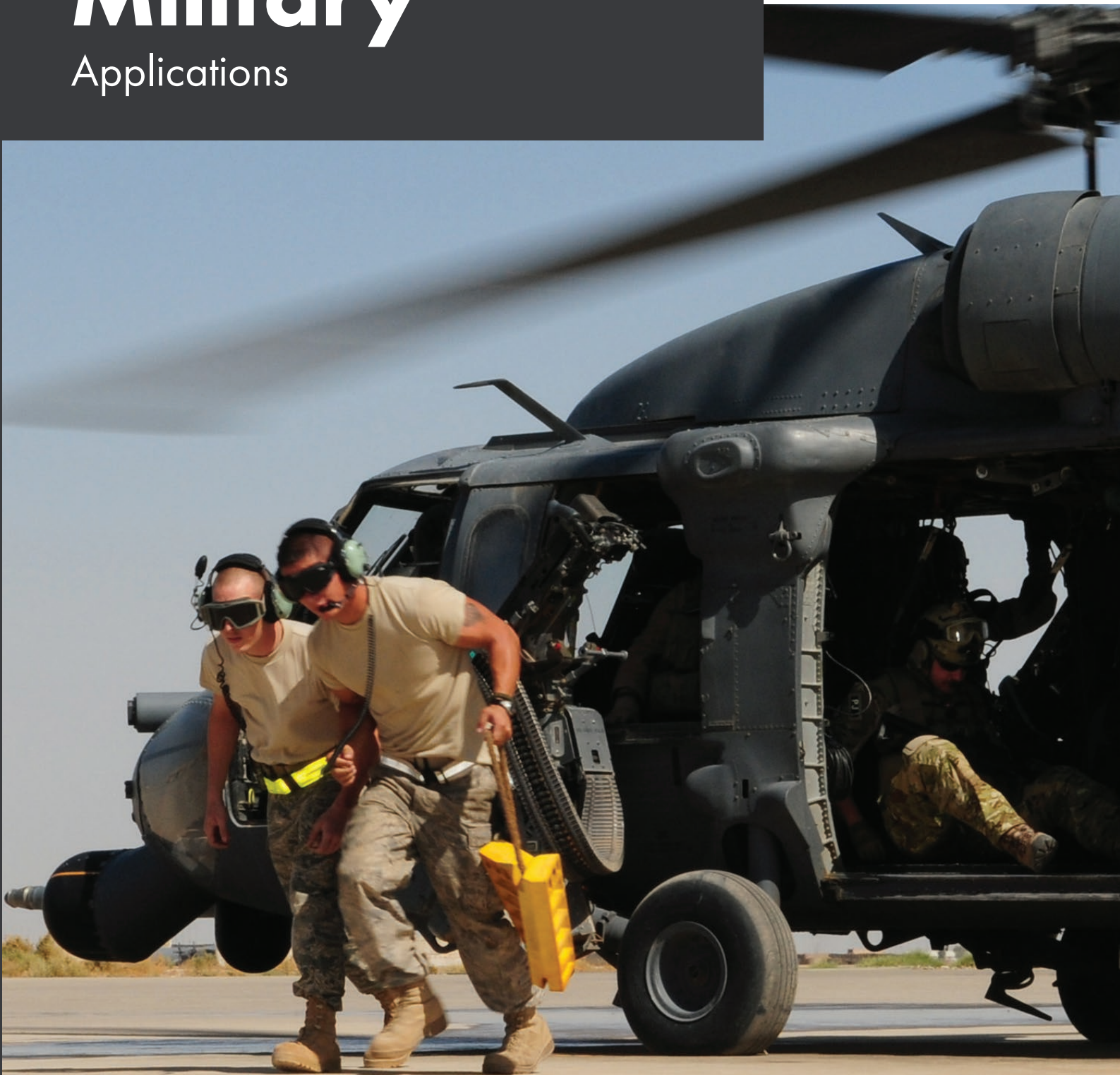




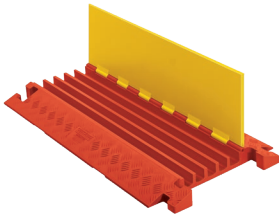
Military

Applications



Cable & Hose Protection

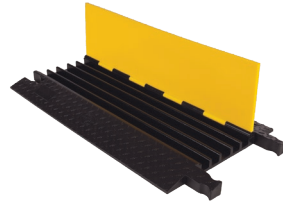
Checkers™ offers the most extensive line of high-performance cable protection products in the world. These durable systems protect valuable electrical cables, cords and hose lines from damage while providing a method of safe passage for pedestrian traffic, vehicles and heavy-duty equipment.



Linebacker® Series

Model CP5X125

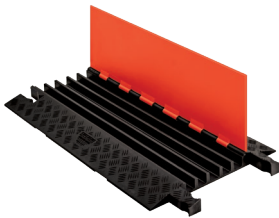
- Checkers' most robust cable protection option
- High load-bearing capacity
- Ideal for: Industrial Applications, Oil and Gas, Mining, Military
- ⚠ **WARNING:** Below



Yellow Jacket® Series

Model YJ5-125

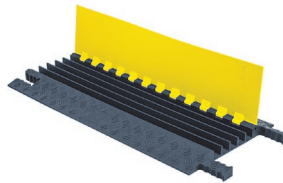
- Dog Bone connector
- The "original" cable protector for over 30 years
- For heavy volume traffic areas
- Ideal for: Mining, Manufacturing, Material Handling, Construction
- ⚠ **WARNING:** Below



Guard Dog® Series

Model GD5X125

- Checkers' most versatile option
- For pedestrian traffic and over-the-road vehicles
- Ideal for: Utility, Industrial, Entertainment
- ⚠ **WARNING:** Below



Grip Guard® Series

Model GG5X125

- Lightweight construction - only weighs 12.75 lbs.
- Gripper connectors to extend to any desired length
- Snap Fit™ hinged lid for easy cable placement
- ⚠ **WARNING:** Below



Fastlane® Series

Model FL2X1.75

- Fast drop-over installation
- Compact, low-profile design
- 1- and 2-channel options
- ⚠ **WARNING:** Below



Diamondback® Hose Bridge

Model UHB4045

- Protects hoses up to 6.5 in.
- Reduces hose maintenance costs
- Ideal for: Mining, Refineries, Industrial, Firefighting Vehicles
- ⚠ **WARNING:** Below



⚠ **WARNING:** This product can expose you to chemicals including Carbon Black, Titanium Dioxide, Formaldehyde, and Benzyl Butyl Phthalate, which are known to the State of California to cause cancer and birth defects or other reproductive harm. For more information go to www.P65Warnings.ca.gov.

Wheel Chocks

Checkers™ manufactures the world's most extensive line of wheel chocks. Checkers™ wheel chocks comply with the safety requirements for a variety of industries and ensure a safe working environment while your vehicles are at rest. Made with durable urethane, wheel chocks provide a safe chocking solution for any type of vehicle.



Heavy-Duty Chocks

Model MC3011

- MC Series - used in mines all around the world
- Durable and lightweight
- Ideal for: Heavy Equipment, Haul Trucks, Cranes, Large Military Tactical Vehicles

WARNING: This product can expose you to chemicals including Carbon Black, which is known to the State of California to cause cancer and birth defects or other reproductive harm. For more information go to www.P65Warnings.ca.gov.



All-Terrain Chocks

Model AT3512

- Durable urethane construction
- Recessed carrying handle
- Resistant to oils and fuels
- High visibility yellow color
- Weather-resistant urethane construction

WARNING: This product can expose you to chemicals including Carbon Black, which is known to the State of California to cause cancer and birth defects or other reproductive harm. For more information go to www.P65Warnings.ca.gov.



General-Purpose Chocks

Model UC1500

- Durable urethane construction
- Oil and chemical resistant
- Recessed carrying handles
- High visibility orange color
- Available in singles or pairs

WARNING: This product can expose you to chemicals including Acrylonitrile and Styrene, which are known to the State of California to cause cancer and birth defects or other reproductive harm. For more information go to www.P65Warnings.ca.gov.



Rubber Chocks

Model RC450

- Highly durable rubber construction
- Resistant to weather elements
- Ideal for smaller vehicles and trailers
- Small design makes for easy storage



Aviation Chocks

Checkers™ aviation chocks are made of highly durable, lightweight polyurethane. AC chocks last longer than wood chocks, never need painting and eliminate Foreign Object Damage (FOD) threats aircraft. The AC Series is ideal for private, commercial, cargo and military aircraft.

For Large and Oversized Aircraft

Model AC6856

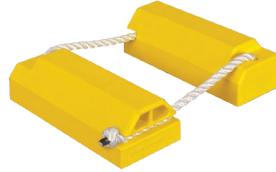
- Won't splinter or crack, eliminating Foreign Object Damage (FOD)
- Features a rope-lock system
- High load-bearing capacity
- ⚠ **WARNING:** Below



For Mid-Sized to Large Aircraft

Model AC4614

- Reduces maintenance costs
- Durable and lightweight
- Won't splinter or crack, eliminating Foreign Object Damage (FOD)
- ⚠ **WARNING:** Below



For Small to Mid-Sized Aircraft

Model AC3512

- An updated version of the original wooden design
- Weather and abrasion resistant
- Optional anti-skid pads available for polished hanger floors
- ⚠ **WARNING:** Below



For Small Aircraft

Model AC201

- Fits the curvature of the tire to absorb wheel-squat
- Features molded-in soft base for increased traction
- Polyester rope lanyard connects chocks
- ⚠ **WARNING:** Below



⚠ WARNING: This product can expose you to chemicals including Carbon Black, Titanium Dioxide, Formaldehyde, and Benzyl Butyl Phthalate, which are known to the State of California to cause cancer and birth defects or other reproductive harm. For more information go to www.P65Warnings.ca.gov.

Warning Whips™

Checkers™ warning whips are designed to increase the visibility of vehicles. Without a whip for extra visibility, large equipment operators can have difficulty seeing these smaller vehicles, potentially leading to accidents. Both lighted and non-lighted models are available, with many different mounting options.



Lighted Warning Whips

Model AP8.120Y.AF4

- Extensive lighting options, with a variety of flash pattern options
- Fiberglass resin construction withstands harsh environments
- Waterproof LED housing to improve longevity

⚠ WARNING: This product can expose you to chemicals including Nickel Compounds, which is known to the State of California to cause cancer and birth defects or other reproductive harm. For more information go to www.P65Warnings.ca.gov.



Non-Lighted Warning Whips

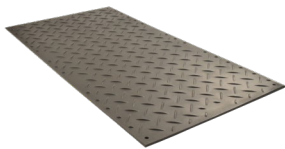
Model Various

- Fiberglass resin construction designed to withstand harsh environments
- Most weather-resistant whip on the market



Ground Protection

Whether you need to protect sensitive turf, or provide extra traction, Checkers™ ground protection solutions have you covered. Checkers™ mats can be connected together to form roadways or walkways, and with a wide variety of traction patterns, weights, and designs, they are applicable to nearly every industry.



AltunaMats®

Model AM48

- Bold cleat tread for great traction
- Mats can be locked together with Turn-A-Links forming a continuous roadway
- Translucent material available to allow sunlight to reach grass
- **⚠ WARNING:** Below



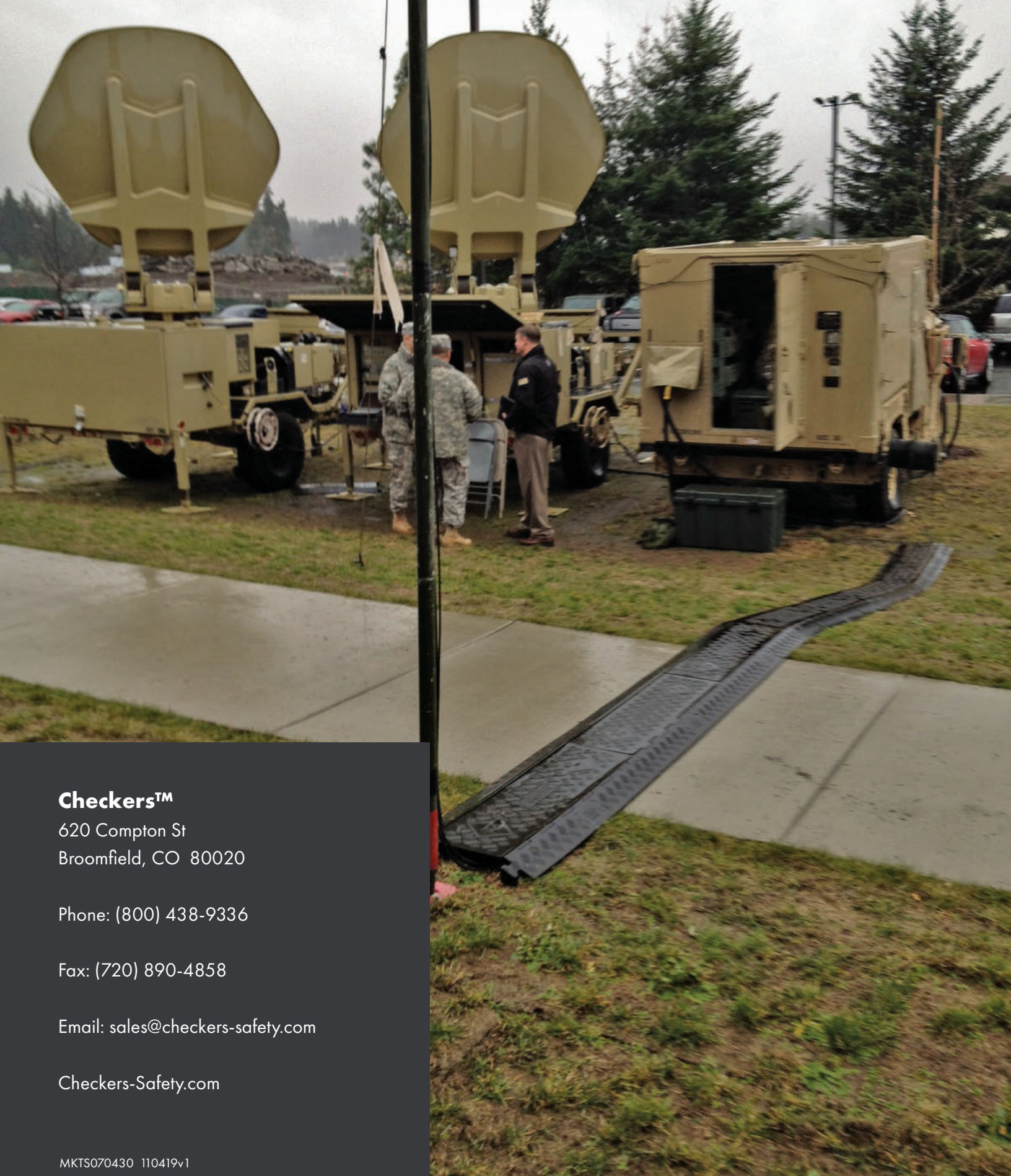
VersaMat®

Model VM48

- Flat tread design is easy to walk on
- Virtually eliminates ground restoration costs from vehicle damage
- Easy to handle
- **⚠ WARNING:** Below



⚠ WARNING: This product can expose you to chemicals including Lead, Carbon Black, Chromium, Nickel Compounds, and Sulfur Dioxide, which are known to the State of California to cause cancer and birth defects or other reproductive harm. For more information go to www.P65Warnings.ca.gov.



Checkers™

620 Compton St
Broomfield, CO 80020

Phone: (800) 438-9336

Fax: (720) 890-4858

Email: sales@checkers-safety.com

Checkers-Safety.com

MKTS070430 110419v1

A product of:



Justrite
Safety Group

Justrite Safety Group is the leading source of safety equipment for flammables and hazardous materials storage and handling, asset protection, environmental protection spill containment, absorbents, specialized chemical storage, cable management, safety showers, eye/face washes, matting, and vehicle safety equipment. Learn more at Justrite.com, Checkers-safety.com, and NoTrax.com.