

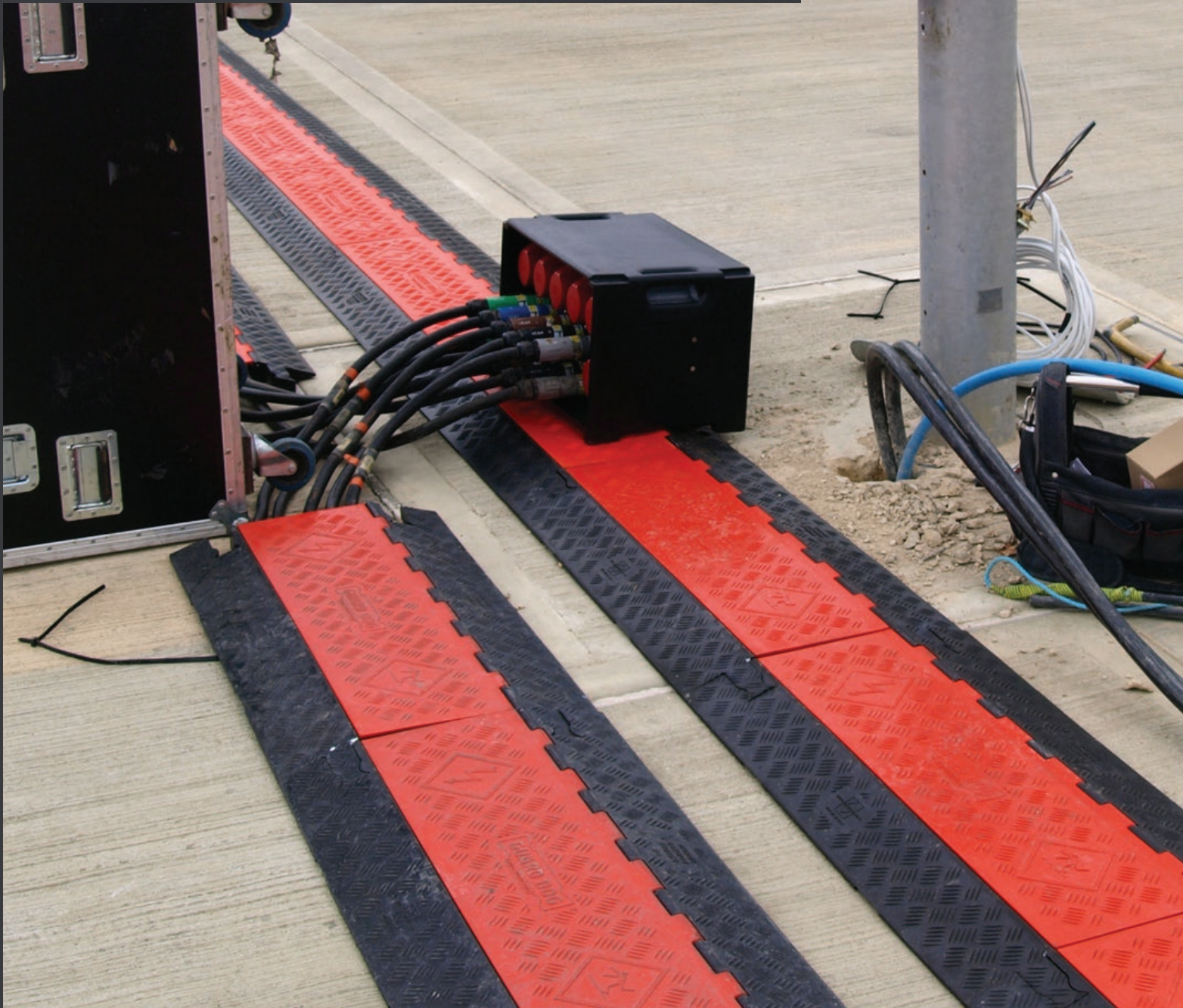


**CHECKERS**

Justrite Safety Group

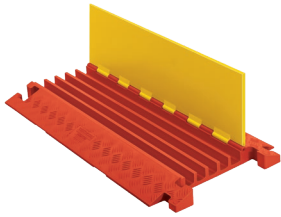
# Electrical

Applications



# Cable & Hose Protection

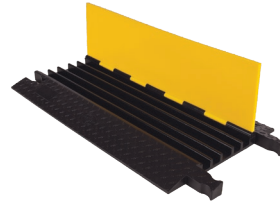
Checkers™ offers the most extensive line of high-performance cable protection products in the world. These durable systems protect valuable electrical cables, cords and hose lines from damage while providing a method of safe passage for pedestrian traffic, vehicles and heavy-duty equipment.



## Linebacker® Series

### Model CP5X125-Y/O

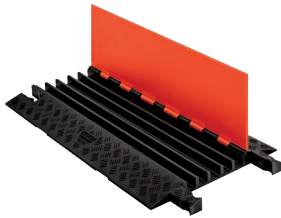
- Protects cables and hoses up to 1.35-in. outside diameter
- Uses T-connector to extend to any length
- Features a load capacity of 40,300 lbs./axle
- **⚠ WARNING:** Below



## Yellow Jacket® Series

### Model YJ5-125-Y/B

- Protects cables and hoses up to 1-in. outside diameter
- Dog Bone connectors to extend to any length
- Features a load capacity of 32,600 lbs./axle
- **⚠ WARNING:** Below



## Guard Dog® Series

### Model GD5X125-O/B

- Protects cables and hoses up to 1.325-in. outside diameter
- Turn pieces and end caps available
- Features a load capacity of 21,000 lbs./axle
- **⚠ WARNING:** Below



## Quick Hook

### Model CHQUICKHOOK-O

- Installs in seconds
- Holds up to 80 lbs.
- Add and remove cords quickly
- Prevents cord damage
- Complies with over 15 cord related OSHA regulations

**⚠ WARNING:** This product can expose you to chemicals including Isopropylidenediphenol and Methylene Chloride, which are known to the State of California to cause cancer and birth defects or other reproductive harm. For more information go to [www.P65Warnings.ca.gov](http://www.P65Warnings.ca.gov).



## Drop-Over Series

### Model CP1X125-GP-DO-O

- Protects cables and hoses up to 1.25-in. outside diameter
- Patented T-connectors to extend to any length
- The CP1X125 features a load capacity of 23,400 lb./axle
- **⚠ WARNING:** Below



## Low-Profile Series

### Model GD5X75-O/B

- Protects cables and hoses up to .75-in. outside diameter
- Dog Bone connectors to extend to any desired length
- ADA Ramp model features a load capacity of 68,000 lbs./axle
- **⚠ WARNING:** Below

**⚠ WARNING:** These products can expose you to chemicals including Carbon Black, Titanium Dioxide, Formaldehyde, and Benzyl Butyl Phthalate, which are known to the State of California to cause cancer and birth defects or other reproductive harm. For more information go to [www.P65Warnings.ca.gov](http://www.P65Warnings.ca.gov).

## Checkers™

620 Compton St  
Broomfield, CO 80020

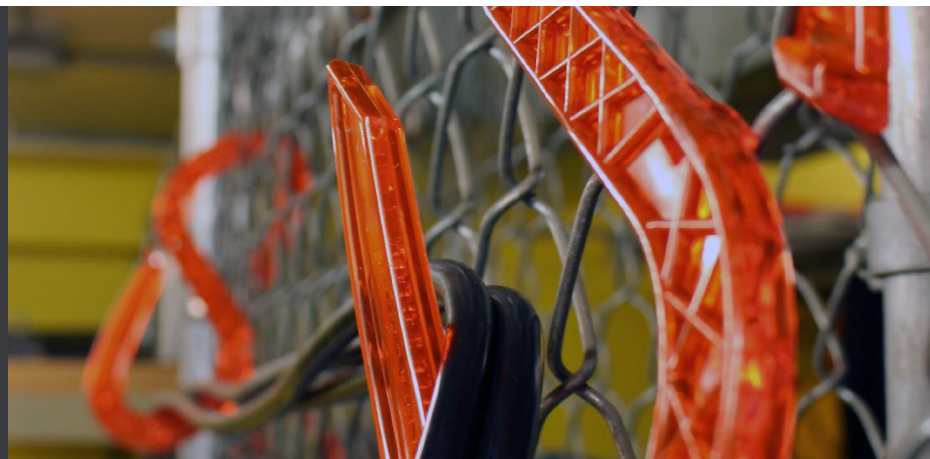
Phone: (800) 438-9336

Fax: (720) 890-4858

Email: [sales@checkers-safety.com](mailto:sales@checkers-safety.com)

[Checkers-Safety.com](http://Checkers-Safety.com)

MKTS070420 (110419)



A product of:



Justrite Safety Group is the leading source of safety equipment for flammables and hazardous materials storage and handling, asset protection, environmental protection spill containment, absorbents, specialized chemical storage, cable management, safety showers, eye/face washes, matting, and vehicle safety equipment. Learn more at [Justrite.com](http://Justrite.com), [Checkers-safety.com](http://Checkers-safety.com), and [NoTrax.com](http://NoTrax.com).