



# Construction

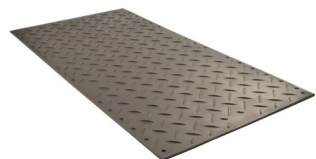
## Applications





## Ground Protection

Whether you need to protect sensitive turf, or provide extra traction, Checkers™ ground protection solutions have you covered. Checkers™ mats can be connected together to form roadways or walkways, and with a wide variety of traction patterns, weights, and designs, they are applicable to nearly every industry.



**AlturnaMats®**  
**Model AM48**

- Bold cleat design for great traction
- Mats can be locked together with Turn-A-Links forming a continuous roadway
- Leave turf smooth, even in soft conditions
- ⚠ **WARNING:** Below



**VersaMat®**  
**Model VM48**

- Flat tread design is easy to walk on
- Virtually eliminates ground restoration costs from vehicle damage
- Easy to handle
- ⚠ **WARNING:** Below



**TrakMat®**  
**Model TM4496**

- Tough, flexible half-inch-thick sheet
- TrakMat® will bend but will not break
- UV protection prevents material degradation
- ⚠ **WARNING:** Below



**Outrigger Pads**  
**Model PAD2424**

- No splinters, warping, or delamination
- Lightweight & heavy-duty
- Recovery memory after bending
- Engineered to bend but not break

⚠ **WARNING:** This product can expose you to chemicals including Lead, Carbon Black, Chromium, Nickel Compounds, and Sulfur Dioxide, which are known to the State of California to cause cancer and birth defects or other reproductive harm. For more information go to [www.P65Warnings.ca.gov](http://www.P65Warnings.ca.gov).

## Warning Whips™

Checkers™ warning whips are designed to increase the visibility of vehicles. Without a whip for extra visibility, large equipment operators can have difficulty seeing these smaller vehicles, potentially leading to accidents. Both lighted and non-lighted models are available, with many different mounting options.



**Lighted Warning Whips**  
**Model AP8.120Y.AF4**

- Extensive lighting options, with a variety of flash pattern options
- Fiberglass resin construction withstands harsh environments
- Waterproof LED housing to improve longevity

⚠ **WARNING:** This product can expose you to chemicals including Nickel Compounds, which is known to the State of California to cause cancer and birth defects or other reproductive harm. For more information go to [www.P65Warnings.ca.gov](http://www.P65Warnings.ca.gov).



**Non-Lighted Warning Whips**  
**Model Various**

- Fiberglass resin construction designed to withstand harsh environments
- Most weather-resistant whip on the market



## Wheel Chocks

Checkers™ manufactures the world's most extensive line of wheel chocks that comply with the safety requirements for a variety of industries and ensure a safe working environment while your vehicles are at rest. Made with durable urethane, Checkers™ wheel chocks provide a safe chocking solution for any type of vehicle.



### Heavy-Duty Chocks

#### Model MC3011

- MC Series - used in mines all around the world
- Durable and lightweight
- Ideal for: heavy equipment, haul trucks, cranes, construction vehicles

**⚠ WARNING:** This product can expose you to chemicals including Carbon Black, which is known to the State of California to cause cancer and birth defects or other reproductive harm. For more information go to [www.P65Warnings.ca.gov](http://www.P65Warnings.ca.gov).



### All-Terrain Chocks

#### Model AT3512

- Lightweight with tough urethane construction
- Chocking instructions imprinted on back of chock
- Complies with SAE-J348, NFPA 1901, and NFPA 1906 Standards

**⚠ WARNING:** This product can expose you to chemicals including Carbon Black, which is known to the State of California to cause cancer and birth defects or other reproductive harm. For more information go to [www.P65Warnings.ca.gov](http://www.P65Warnings.ca.gov).



### General-Purpose Chock

#### Model UC1500

- UC Series - designed for a wide variety of commercial applications
- Lightweight urethane construction
- Ideal for: over-the-road trucks, trailers, pickups, utility vehicles

**⚠ WARNING:** This product can expose you to chemicals including Acrylonitrile and Styrene, which are known to the State of California to cause cancer and birth defects or other reproductive harm. For more information go to [www.P65Warnings.ca.gov](http://www.P65Warnings.ca.gov).



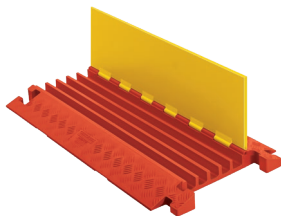
### Rubber Chocks

#### Model RC450

- Highly-durable rubber construction
- Resistant to weather elements
- Small design makes for easy storage
- Ideal for: smaller vehicles and trailers

## Cable & Hose Protection

Checkers™ offers the most extensive line of high-performance cable protection products in the world. These durable systems protect valuable electrical cables, cords and hose lines from damage while providing a method of safe passage for pedestrian traffic, vehicles and heavy-duty equipment.



### Linebacker® Series

#### Model CP5X125

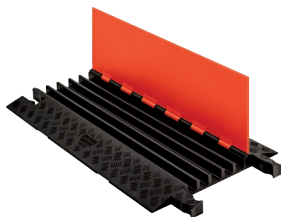
- Uses T-connector
- Checkers' most robust cable protection option
- High load-bearing capacity
- Ideal for: oil and gas, military, construction
- **⚠ WARNING:** Below



### Yellow Jacket® Series

#### Model YJ5-125

- Dog Bone connector
- The "original" cable protector for over 30 years
- For heavy volume traffic areas
- Ideal for: mining, manufacturing, material handling, construction
- **⚠ WARNING:** Below



### Guard Dog® Series

#### Model GD5X125

- Checkers' most versatile option
- Ideal for: utility, industrial, entertainment, construction, over-the-road vehicles
- **⚠ WARNING:** Below



### Utility Crossover System

#### Model COP2200-4.5

- Polyurethane construction
- Lightweight and portable
- Load capacity up to 4,000 lb./tire
- 4.5-inch tunnel size
- **⚠ WARNING:** Below

**⚠ WARNING:** This product can expose you to chemicals including Carbon Black, Titanium Dioxide, Formaldehyde, and Benzyl Butyl Phthalate, which are known to the State of California to cause cancer and birth defects or other reproductive harm. For more information go to [www.P65Warnings.ca.gov](http://www.P65Warnings.ca.gov).



A photograph of a construction site. In the foreground, a Komatsu excavator with a white cab and orange boom is parked. A worker wearing a blue hard hat and a high-visibility vest is sitting in the cab. The excavator's tracks are visible. In the background, there are trees and a building. In the bottom right corner, a white safety device with four large red and blue buttons is connected to a red and yellow striped mat.

## Checkers™

620 Compton St  
Broomfield, CO 80020

Phone: (800) 438-9336

Fax: (720) 890-4858

Email: [sales@checkers-safety.com](mailto:sales@checkers-safety.com)

[Checkers-Safety.com](http://Checkers-Safety.com)

MKTS070415 (110419v1)

A product of:



Justrite Safety Group is the leading source of safety equipment for flammables and hazardous materials storage and handling, asset protection, environmental protection spill containment, absorbents, specialized chemical storage, cable management, safety showers, eye/face washes, matting, and vehicle safety equipment. Learn more at [Justrite.com](http://Justrite.com), [Checkers-safety.com](http://Checkers-safety.com), and [NoTrax.com](http://NoTrax.com).